



GAT MONTHLY MEMBERSHIP PROGRESS REPORT

Results as of: 4/30/2023

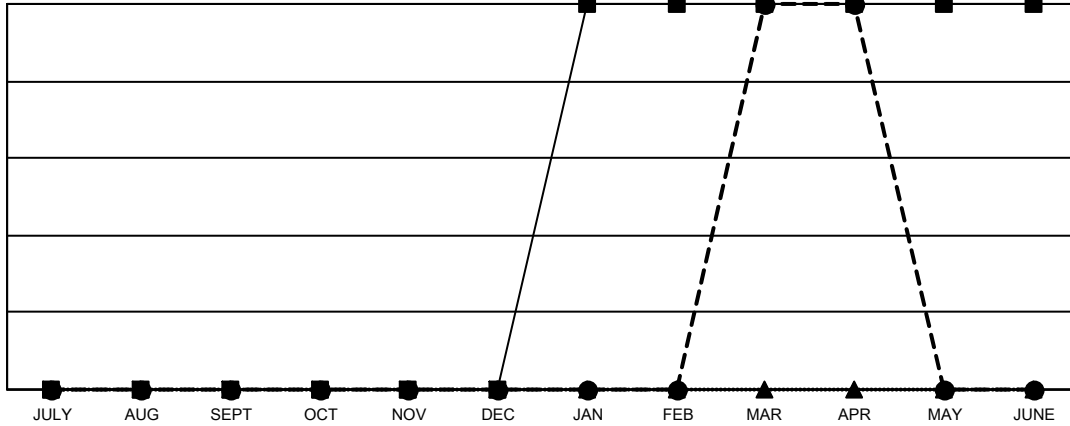
Multiple District 109

LOCATION: ICELAND

| Clubs | | | |
|-----------------------|---------------|-----------|---------------|
| RESULTS FOR 2022-2023 | | | |
| QUARTER | NEW CLUB GOAL | NEW CLUBS | DROPPED CLUBS |
| JULY/AUG/SEPT | 0 | 0 | 0 |
| OCT/NOV/DEC | 0 | 0 | 0 |
| JAN/FEB/MAR | 1 | 1 | 0 |
| APR/MAY/JUNE | 0 | 0 | 0 |

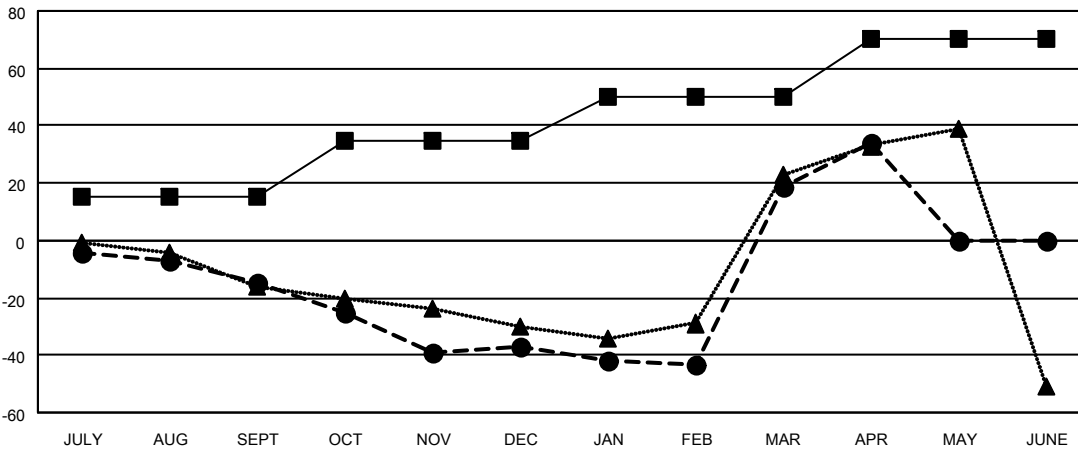
| Members | | | |
|-----------------------|------------------------|----------------------|--|
| RESULTS FOR 2022-2023 | | | |
| QUARTER | MEMBER GROWTH NET GOAL | MEMBER GROWTH ACTUAL | DROPPED MEMBERS ACTUAL (including transfers) |
| JULY/AUG/SEPT | 15 | 11 | 25 |
| OCT/NOV/DEC | 20 | 19 | 41 |
| JAN/FEB/MAR | 15 | 93 | 37 |
| APR/MAY/JUNE | 20 | 23 | 8 |

GOALS AND ACTUAL NEW CLUBS CUMULATIVE



- CURRENT YEAR GOALS FOR NEW CLUBS
- CURRENT YEAR ACTUAL NEW CLUBS
- ▲- LAST YEAR ACTUAL NEW CLUBS

GOALS AND ACTUAL MEMBERS CUMULATIVE



- MEMBER GROWTH NET GOAL
- MEMBER GROWTH ACTUAL
- ▲- LAST YEAR MEMBERSHIP ACTUAL

| | | |
|------------------------|---|------------------------------------|
| DROPPED CLUBS: 0 | 29 CLUBS OF 82 ADDED 1 OR MORE NEW MEMBERS | GENDER DISTRIBUTION |
| DROPPED MEMBERS | CLICK HERE FOR CUMULATIVE MEMBERSHIP DATA | MALE 1,423 (71.19%) |
| DECEASED 19 | | FEMALE 576 (28.81%) |
| CLUB CANCELLED 0 | | NON BINARY 0 (0.00%) |
| OTHER 92 | | PREFER NOT TO ANSWER 0 (0.00%) |
| TOTAL 111 | | TOTAL FAMILY UNIT MEMBERS 24 |
| | | FAMILY MEMBERS PAYING HALF DUES 12 |